

	No.:	Rev: A
Title: Container USB to Serial Cable Installation INSTRUCTIONS PN 98-50851	Supersedes:	Page: 1 of 6

Following instruction are to be followed in setting up to use either the MA to USB cable or the Deutsch to USB cable for connection to a PC in downloading or uploading to the Carrier controller.

Part Number	Part Name
22-50491-00SV	Deutsch to USB
22-50492-00SV	MA to USB

MA to USB



Deutsch to USB



Prior to the FTDI device being plugged into the PC, please download the latest drivers for your operating system from the FTDI website and check if you have the latest version of DataLINE software installed.

We recommend downloading the CDM Setup executable (Driver) from the FTDI website using the below link.

(Screenshot FTDI website showing the driver download location)


Operating System	Release Date	Processor Architecture				Comments	
		x86 (32-bit)	x64 (64-bit)	ARM	MIPS		SH4
Windows*	2017-08-30	2.12.28	2.12.28	-	-	-	WHQL Certified. Includes VCP and D2XX. Available as a setup executable. Please read the Release Notes and Installation Guides.

FTDI Driver location:

<https://www.ftdichip.com/Drivers/D2XX.htm>



<u>Used On:</u> NaturaLINE Model Units	<u>Prepared By:</u> Hoover/Gray	<u>Approved By:</u> Hoover	<u>Date:</u> 09/2019
---	------------------------------------	-------------------------------	-------------------------

	No.:	Rev: A
Title: Container USB to Serial Cable Installation INSTRUCTIONS PN 98-50851	Supersedes:	Page: 2 of 6

Procedure

1. Download the driver (unpack the setup executable from the zip-file).

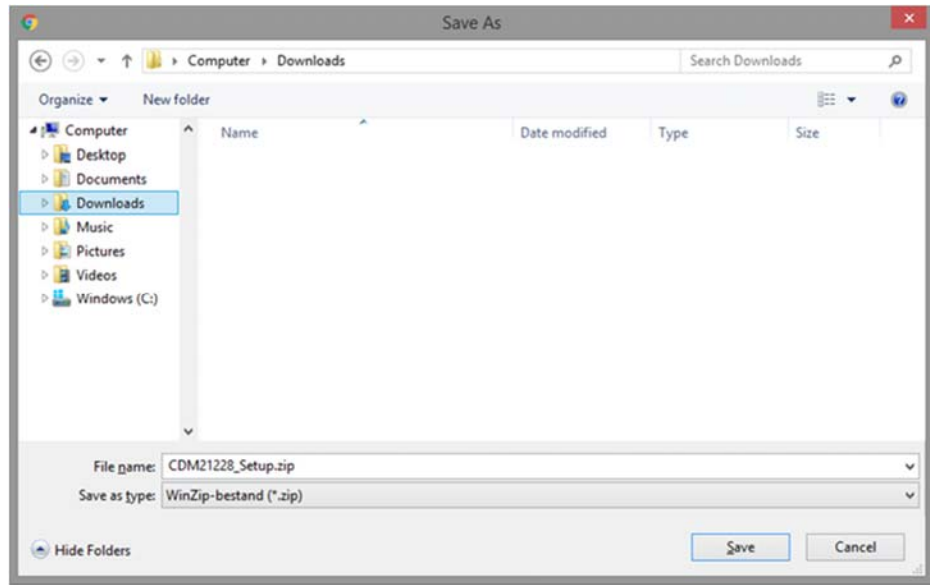


Figure 1 Download Driver

2. Run setup.exe and right-click and select 'Run as administrator' as shown in Figure 2.

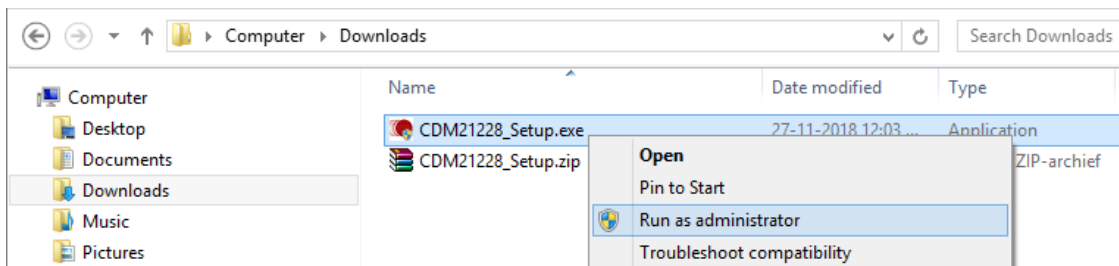



Figure 2 Setup Executable Run as administrator

<u>Used On:</u> NaturaLINE Model Units	<u>Prepared By:</u> Hoover/Gray	<u>Approved By:</u> Hoover	<u>Date:</u> 09/2019
---	------------------------------------	-------------------------------	-------------------------

	No.:	Rev: A
Title: Container USB to Serial Cable Installation INSTRUCTIONS PN 98-50851	Supersedes:	Page: 3 of 6

3. Press the Extract button as shown in Figure 3.

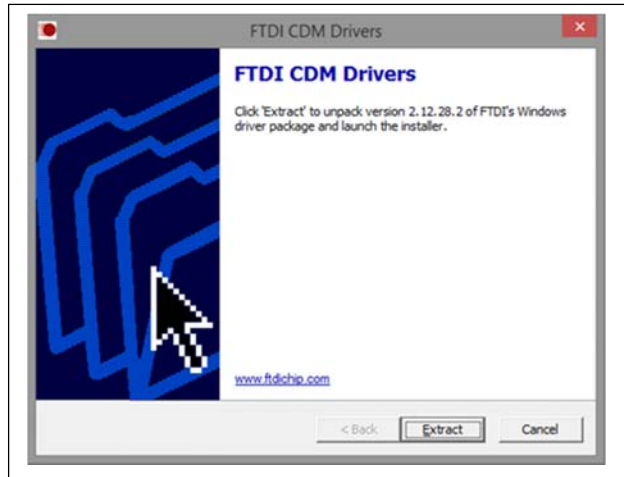


Figure 3 Extract CDM Drivers


4. Follow the installation instructions shown in Figure 4 including license terms agreement acceptance and the driver will be automatically installed.



Figure 4 Driver Installation Wizard

5. Connect the USB Cable to a spare USB port on your PC.

<u>Used On:</u> NaturaLINE Model Units	<u>Prepared By:</u> Hoover/Gray	<u>Approved By:</u> Hoover	<u>Date:</u> 09/2019
---	------------------------------------	-------------------------------	-------------------------

	No.:	Rev: A
Title: Container USB to Serial Cable Installation INSTRUCTIONS PN 98-50851	Supersedes:	Page: 4 of 6

6. The new installed USB Cable can be found in the Device Manager shown in Figure 5.

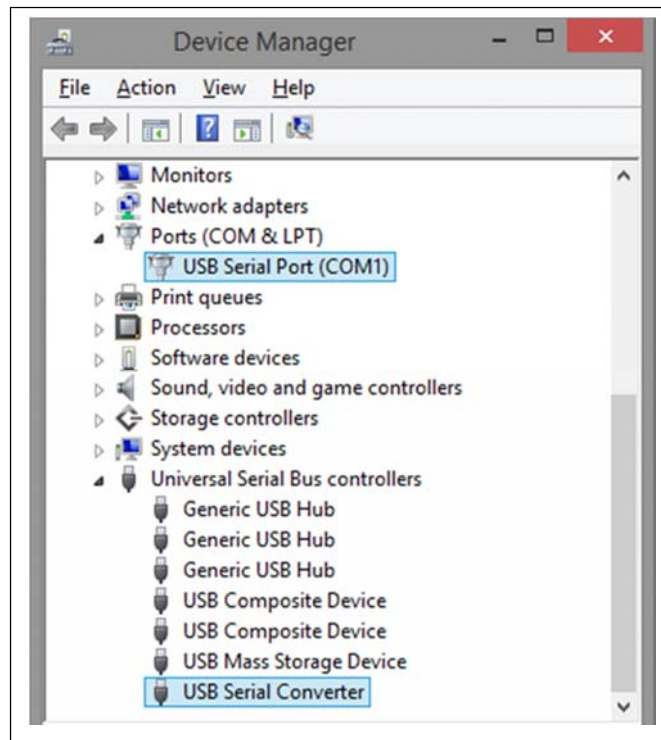


Figure 5 Device Manager View

NOTE: The device must be physically plugged in after running the setup exe to complete the installation.

7. Open DataLINE clicking on the “Launch Pad” Icon shown in Figure 6.

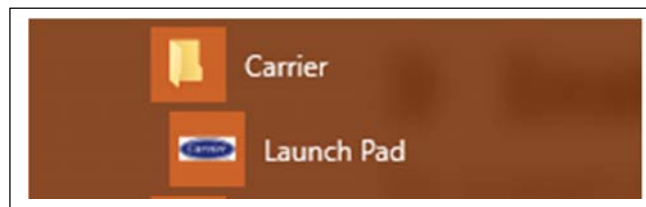



Figure 6 Launch Pad View

<u>Used On:</u> NaturaLINE Model Units	<u>Prepared By:</u> Hoover/Gray	<u>Approved By:</u> Hoover	<u>Date:</u> 09/2019
---	------------------------------------	-------------------------------	-------------------------

	No.:	Rev: A
Title: Container USB to Serial Cable Installation INSTRUCTIONS PN 98-50851	Supersedes:	Page: 5 of 6

8. In the Main screen under the Miscellaneous section click on “Program options” shown in Fig 7.

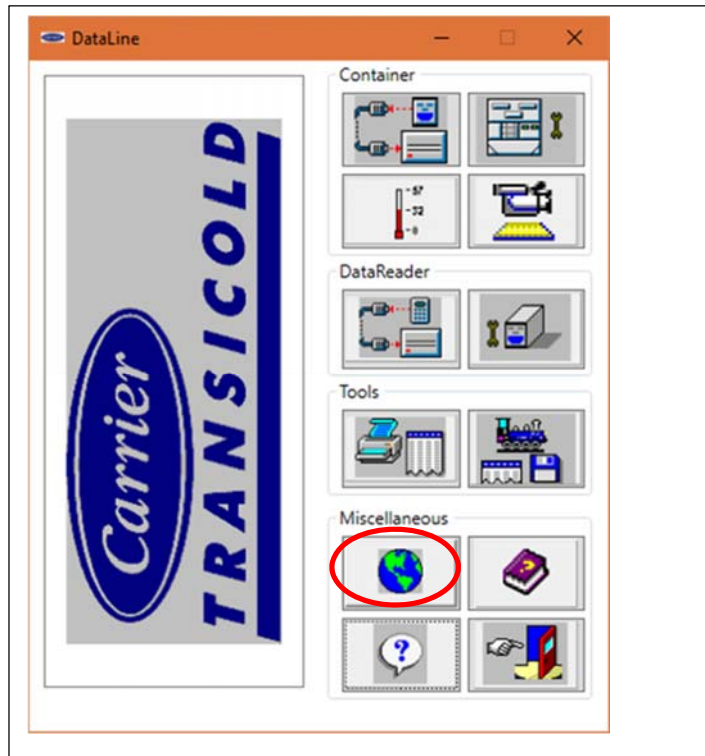



Figure 7 DataLINE Main screen View

<u>Used On:</u> NaturaLINE Model Units	<u>Prepared By:</u> Hoover/Gray	<u>Approved By:</u> Hoover	<u>Date:</u> 09/2019
---	------------------------------------	-------------------------------	-------------------------

	No.:	Rev: A
Title: Container USB to Serial Cable Installation INSTRUCTIONS PN 98-50851	Supersedes:	Page: 6 of 6

9. Select the Serial Port, the available Com Port and press “Save” shown in Figure 8.

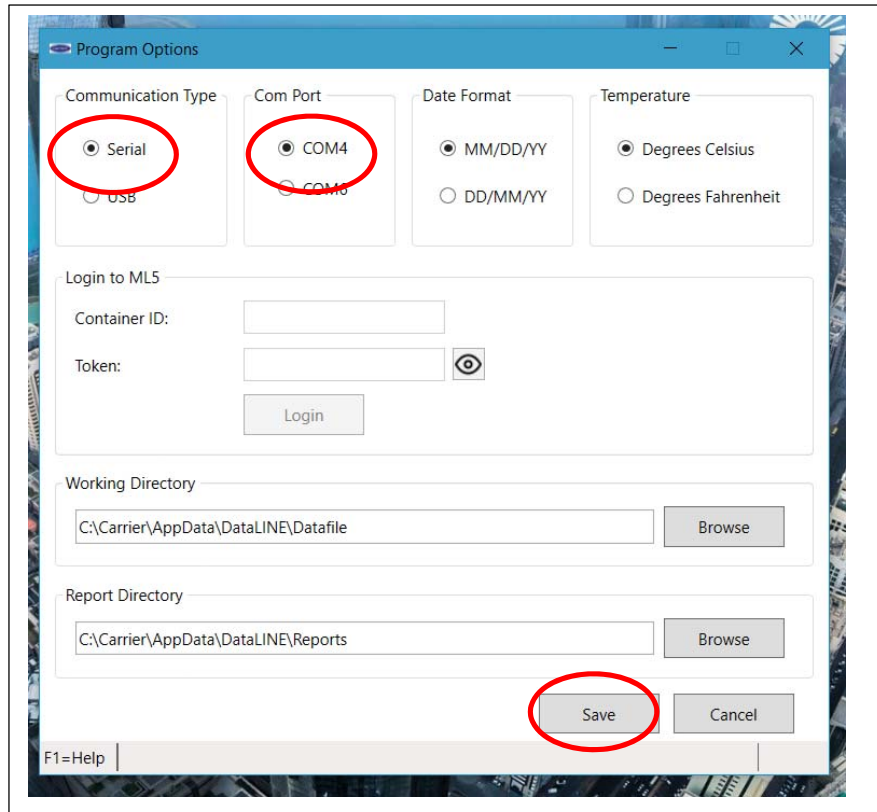


Figure 8 Dataline Program Options

- 10. The Setup is now complete and the USB Cable is ready to be used.
- 11. Reboot your computer to ensure the drivers work properly.

<u>Used On:</u> NaturaLINE Model Units	<u>Prepared By:</u> Hoover/Gray	<u>Approved By:</u> Hoover	<u>Date:</u> 09/2019
---	------------------------------------	-------------------------------	-------------------------